

Board of Directors:**President**Ann Delzell
303-776-3295**Vice President**Peggy Keagle
970-532-3851**Treasurer**Diana Wade
970-635-0103**Secretary**Lori Disney
970-593-9655**Member-at-Large**Judy Sprague
970-506-5966Carolyn Pearce
970-635-9764**Gallery Director**Jeff Brooks
970-412-8223**Newsletter**Lori Disney
disneygallery@q.com
m
Jeff Brooks**Website**Bonnie Stählin
The Dandelion
Group - email:
Dandelion@frii.com**Notice:**

Any Newsletter information must be delivered to the Gallery or sent to disneygallery@q.com by the 20th of each month to be considered for publication. There is a green "Newsletter" folder at the Gallery which can be found on the bookcase to the left of the desk. Please leave items with a phone number in it and the Newsletter team will call with any questions.

2010 June Show in July!!

TVAL is proud to present our **Regional Juried Fine Arts Show** from **June 30th through July 30th** at the Lincoln Gallery! This show is open to the public! The categories will be; Oil, Pastel, Water Media, Acrylic, Mixed Media, Photography and 3D. Entry fee is \$12 per entry with a maximum of 3 entries per artist. Entries may be submitted beginning June 22nd, with the deadline on June 26th at 1pm. Our Juror for this show will be **Robert Spooner**. Robert was born in Roswell, New Mexico and received a BFA from Louisiana Tech University in 1978 at which time he pursued a career in graphic design. In 1998 he developed an interest in oil painting as a creative antidote to the structured advertising world. Robert has won numerous awards throughout the United States and has been published in several well known magazines. **Opening Reception** and Awards Night will be **July 9th**, 6-8 PM, during the "Night on the Town". **Awards** will be presented at **6:30 PM**. It's coming up quick, so get those pieces finished and/or framed for this fabulous show! **Bring your friends and family to this event!** More details will be available on our website soon. For more information, contact the Gallery at: (970)663-2407 or Lincolngallery@qwestoffice.net

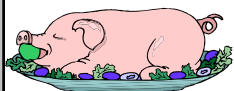
**June Members Meeting**

This Months Members Meeting will be **Monday, June 21st at 6:30pm**, followed by a presentation "**Lighten Up!**" with **Trish Murtha**, artist, teacher and designer. Trish is new to Loveland's art community! You'll be entertained and informed by her seriously lighter side of color theory. She will create an impressionistic Colorado Wildflower "Dance" in watercolors and combine the use of Nita Engle's "bulls-eye" and Nita Leland's 7-tube color palette. An award-winning artist and popular teacher from New England, you'll be glad she's our neighbor now! **This is sure to be another excellent program for all!!**

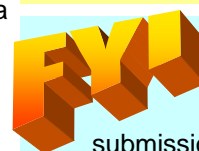


Food for Thought!

Have you made your annual \$20 food contribution? We have 2 more shows and a silent auction coming up. Do your fair share in promoting TVAL by helping us provide quality food at these events. If there are extenuating circumstances please contact Ann Delzell!

**How was it?...**

The **David Pyle** presentation, "**What Every Artist Needs to Know About Paints and Colors**", was a fun and interactive program. Members learned how the chemical qualities of new and old pigments affect the quality and longevity of our art. Oils, watercolors, acrylics and even ink cartridges are dependent upon the chemical makeup used to create the colors we love. Most of our modern colors are chemically produced instead of yesterdays plant and mineral make-ups. We even learned the origin of those classic colors, some being more expensive and/or less desirable than others. This is why today's colors are better than the paints the masters used centuries ago! By knowing the qualities of the colors available to us, we can be more successful at keeping our highlights bright and our neutrals clean for many years to come. In addition, we were able to paint with crushed bugs and witness the downfalls of traditional biological pigments. What more could you ask for in a demo!! Thanks David!

**Brushstrokes Has a New E-Mail Address!**

Please direct all your newsletter submissions to the following e-mail address:
disneygallery@q.com



TVAL Members Corner

Workshops/Classes

Dot Pecina

Ongoing Oil Classes
beginner/intermediate
Mondays, 9-11am
and 7-9pm

\$49 for 4 sessions, Longmont, CO
(303)682-8957,
www.dotpecinaoil.com

Sally Fulton

Ongoing Pastel/Oil Classes
Wednesdays, 2-5 pm, Thursdays,
11-2pm \$25 per class
Longmont, CO, (303)776-7761

www.sallyfulton.com
sallyfulton@comcast.net

Ann Arensmeyer

Ongoing Beginning Oil Classes
Tuesdays, 6-9pm

Ongoing Watercolor Media Classes
Friday, 1-4pm
Loveland, CO

(970)669-3638, colane@q.com

Cyd Rust

"Experimenting with Acrylic Brands"
Artists can explore different acrylic
products, 4 3hr. classes, \$150
Materials included

Call to begin scheduling classes
(970)667-2835, ruststudios@frii.com

Karen Ramsay

Watercolor Classes
at The Gardens at Spring Creek
Fort Collins, CO, (970)416-2486
www.fcgov.com/horticulture

Displays/Shows

Sally Fulton

Basil Flats Restaurant, Longmont, CO
thru May

Longmont City Council Chamber
thru July 15

ASLD Summer Art Market
June 12-13

Diane Wood

Longmont United Hospital
Longmont, CO ends July 14

Diana Wade

Gardens at Spring Creek Gift Shop
Fort Collins, CO April & May
Art Center of Estes Park
year round

Juried into Shows

Sally Fulton & Jean Batchelder

Rist Canyon Live Auction

Kerri Ertman

Alzheimer's Association art
auction

Dena Kirk

National Oil Painters of
America Show

Jenifer Cline & Dena Kirk



WAOVing the Golden State, CA.

Awards & Recognition

St. Stephens Juried Art Show:
Judy Sprague-3rd Place Graphics
Becky Everitt-3rd Place Oil
Diane Wood-2nd Place Pastel

Classified

Aims Community College

is looking for artists to display each
month in their Loveland Campus
facility. 10% commission to TVAL.
(970)330-8008, ext. 3300

lherrer8@aims.com

Jim Digby Photography

Special rates for TVAL
members!



10 photo's of 2-D art for
\$40, saved to CD for \$15 more. What
a deal!

(970)481-9439

Attention All Berthoud Artists

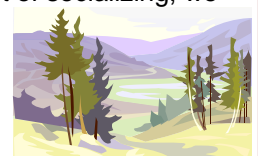
Exhibit and sell your work at the 1st
Annual "Art in the Garden",
sponsored by Berthoud Arts and
Humanities Alliance (BAHA) and
Citizens First. The Sale will be in the
garden of the historic Wagner home
on June 26th, from 4-8:30pm. Contact
Lori, (970)712-7006, or Dorian, (970)
214-8840

A few word from our Director:

As warm weather finely arrived the
Thursday **Plein Air** group is once again on
the move. We usually have 4 to 9 people
each week depending on schedules. Instead of
making phone or email contact each week for
locations and times, we set them up on a six
week basis. People meet at the prearranged weekly site whenever
they can, some will make it extra early, 6 am to 7:30 am, while others
might arrive a little later in the morning. Each artist needs to have
their own equipment, (paints, easels, etc), life sustaining items
(snack bars, warm clothes, water, bug spray etc.) and of course, the
desire to paint outdoors. We do try to pick places that have facilities,
RESTROOMS at least & maybe water for drinking. We try to stay
within 30 miles of Loveland for now, and will move into the Mountain
canyons when it gets hotter this summer. Estes Park is on tap for fall painting and we take suggestions from people
on places that may have a painting or two in them. The group is growing and learning each time out. We gather the
crew together for a short critique in the morning. No time limit on when we leave, some have to go to
work, others will stay until the light washes the subject matter out. There isn't a lot of socializing, we
are trying to capture subject matter quickly, efficiently and while we have good
natural light. Many times we are approached by the curious public, which has
provided opportunities for promoting the artist, Art League and Lincoln Gallery.
We have fun, are learning while building relationships within in the group. If
your interested, contact Jeff at 663-2407 and we will email you the schedule.



Did You Know... The Gallery receives
newsletters from the following groups; *Artists
Association of Northern Colorado, Boulder Art
Association, Greeley Art Association, Cheyenne
Artists Guild, Louisville Art Association, The Art
Center of Estes Park, Longmont Artists' Guild,
Carnegie Arts Center and Colorado Artists
Guild.* If you wish to view any of these newslet-
ters look in the green folder on the bookshelf
labeled "newsletter submissions or "Google"
their respective websites. In turn, we
send our newsletter to each group,
thereby sharing information and
provide you with the most current
and accurate information possible!



Donations

Thompson Valley Art League has been a part of the Loveland Community for 45 years. We are a non-profit, 501 (C) 3 organization. Contributions at all levels are welcome from individuals and businesses who wish to take advantage of TVAL's year-round publicity efforts including acknowledgment in our show brochures, in our newsletter, on our website and at the Gallery. Contributions are tax deductible in accordance with current IRS codes.

New Members

Estelle DeRidder

June Gallery Attendants

Diane Wood
Sally Fulton
Mary Hoffman
Erin Leaper

Special Thanks

Jenifer Cline

Free Rides

These members have offered to provide transportation to our meetings; Jeral McDonald, Jenifer Cline, Jean Batchelder and Lori Disney

Questions?

Feel free to talk to any member of your Board or the Gallery Director.

Call For Entries

Art for Awhile

Broomfield Art Committee
3 Exhibit opportunities - an art on loan program
June 1, 2010-May 30, 2011
broomfield.org/cultural-affairs/

Americas 2010

Entry deadline: June 1, 2010
August 20-October 2, 2010
Minot State University
Minot, ND (800)777-0750 ex. 3264
minotstateu.edu/nac

"Color-ado!" 3rd Annual Art Exhibition

Entry deadline: June 30, 2010
September 3-6, 2010
Boulder, CO (303)544-0684
malia@mt-studio.net

2nd Annual Loveland Art Studio Tour

Entries postmarked by June 1, 2010
October 16-17, 2010

Websites; artShow.com, theArtist.com, artdeadline.com

Loveland, CO (970)980-4764
kvecchio@engagingloveland.org
40th National Art Show and Sale
Cheyenne Artists Guild
Entry deadline: June 14, 2010
August 1-31, 2010
Cheyenne, WY (307)632-6114
cheyenneartistsguild.org

Artistic Infusion Program

The United States Mint
Entry Deadline: July 6, 2010
U.S. Coin and Medal Designs
usmint.gov/artists

25th Annual National Fine Art Show

Louisville Art Association
Entry Deadline: July 3, 2010
September 4-12, 2010
Louisville, CO janefriday1@gmail.com
Louisvilleart.org



What's Out There

Shows/Displays

10th Annual High Peaks Art Festival
June 26-27, 2010

Louisville, CO louisvilleart.org

Plein Air Rockies 2010

August 7-October 3
Estes Park, CO estesarts.com
info@estesarts.com

Heart of the West

October 16 & 17, 2010
Lander, WY (307)332-3892
director@landerchamber.org

The Artists Choice

Lakewood Cultural Center
May 17-June 18, 2010
Lakewood, CO lakewoodartscouncil.org

"Art on the Corner"

26th Annual Sculpture and Sale Exhibit



May 7-November 6, 2010
Grand Junction, CO Allison@gjcity.org
Governor's Invitational Art Show

April 24-May 30th, 2010
Loveland, CO (970)663-0919

Yampa River Art Stroll

Steamboat All Arts Festival
August 20-22, 2010
Steamboat Springs, CO
steamboatallartsfestival.com

Custer Stampede Buffalo Art Auction

Display: May 21-22, 2010
Auction: September 24-25, 2010
Custer, SD custerstampede.com

Classes

Online art magazine: EmptyEasel.com
Artist & Art Group Directory: ArtChain.com
Build a website at: artdealers.com

June Calendar

May 31: Memorial Day-Gallery Closed

June 3: Open Paint Day 11-5 pm

June 4-5: Changeover

June 10: Open Paint Day 11-5 pm

June 11: Night on the Town 6-9

June 14: Board Meeting 5:30 pm

June 17: Open Paint Day 11-5

June 21: Members Meeting 6:30pm & Trish Friedman

June 24: Open Paint Day 11-5 pm

June 25-26: Changeover

June 22-25: Entry submissions accepted

June 26: 1pm entry deadline

Gallery Notes

2010 Gallery Attendants Needed! Schedule your 2 days and fulfill your membership requirements. Call the Gallery at (970)633-2407.

Sales Receipts: Please remember to write the name of the artist and the items' title or description for **every** item sold.

Changeover: Please bring/take your items for changeover on the 2 days specified on the calendar. Arrangements must be made in advance with the Gallery Director if you have scheduling problems. **Gallery Thermostat:** If you **must** change the temperature, please remember to **change it back** before you leave, and help keep energy costs down!

Temp. = 74 Day, 75 Night, Fan = AUTO Thanks!



Thanks, Sponsors & Patrons

**Good Samaritan Society
Loveland Village-** "Living the whole of life" ... a continuum of care. Twin/patio homes; independent apartments; assisted living; health care/Alzheimer's units; and rehab. (970)669-3100
www.good-sam.com

The Dandelion Group- Web, Design & Photography
www.dandeliongroup.com

Otteman Arts, LLC- Custom Picture Framing and Gallery
211 N. Cleveland Ave.
(970)278-0120
www.ottemanarts.com

Pendleton/Meeker Farms; Leroy, Illinois

McKee Medical Center



Thompson Valley Art League

429 N. Lincoln Ave.
P.O. Box 1055
Loveland, Colorado 80539

Phone: 970-663-2407
email: lincolngallery@qwestoffice.net
www.lincolngallery.com